



FLOORING
INSTALLATION, CARE AND MAINTENANCE GUIDE

FORMICA® FLOORING provides good looks that last. With the depth and beauty of a natural wood appearance, it's tougher and more durable than most solid timber surfaces, making it incredibly resistant to wear, scratches, and stains. And with the latest in flooring technology built-in, it's able to withstand the busiest home or commercial environments. This Installation, Care and Maintenance manual will guide you step-by-step through the installation process. It will ensure that you have the necessary tools and accessories to get the job done. You will also find out how to care for your floors so that they continue to shine for years to come.



PRE-INSTALLATION CHECKLIST

Formica Flooring is hard wearing and straightforward to install. Thanks to our unique Forma-Lock™ locking system, you won't need any messy glues or nails. It simply installs over most hard flat surfaces, and in some instances there is no need to remove your existing floor covering. Once panels are locked, they stay locked so you can walk on them immediately after they've been laid.

You'll find everything you need to know here before you begin work.

- Formica Flooring must be laid as a floating floor. It must not be glued or nailed to the sub floor.
- Defective planks should not be laid, so carefully check each one before installing. Planks that are damaged or do not fit together must be returned to the retailer. Replacement stock will then be organised.
- Do not heat or air-condition the room prior to or during the installation period.
- Open only one pack at a time when installing Formica Laminate Flooring. If you are installing Formica Supergloss Flooring four packs should be opened and mixed for greater pattern variation.
- Leave a minimum 10mm expansion gap around the perimeter of the laid floor.

PLEASE NOTE a gap of 1.4mm per linear meter per side is recommended. For example, a 10m x 8m room requires a 14mm gap each side of the 10m length, and a 12mm gap each side of the 8m length. (Nominal measurements.)

- Floor area 10m² to 80m²: requires a 10mm to 14mm gap
 - Floor area 80m² or greater: install an expansion profile to divide the floor into even parts
 - It is important to leave the recommended expansion gap around flooring where there are pipes, columns or door jambs. Without one, the flooring will not be able to expand or contract properly as temperatures in the room change. Fill the gap with Colour Sealant*.
 - Formica Flooring must be laid separately between adjoining rooms. Allow a 20mm gap between the doorframes of the adjoining rooms. And make sure you cover the gap with an expansion profile*.
- PLEASE NOTE** It is recommended that Lock Seal* be used between planks in areas subject to frequent accidental water spillage. For example, kitchens, cafes, restaurants, bars and hairdressing salons and exterior doorways. (Please refer to the instructions listed on the bottle for correct application.)
- Ensure you have an additional 5% allowance of flooring, above what is required to complete the job. This is to cover wastage during the installation process. Refer to the Formica Flooring Room Calculator within this booklet to work out exactly what you need.
 - Formica Flooring planks should be laid parallel to the incoming light source. In hallways and narrow rooms install planks to follow the length of the room. This is to maximize the appearance of the floor's grain or pattern.
 - Check that you have all the correct accessories and tools to complete the installation. Refer to the Accessories Needed and Tools Needed sections of this booklet.
 - For further information on laying Formica Flooring, please refer to the Formica Flooring Installation DVD.

ACCESSORIES CHECKLIST

To help make your job easier, make sure you have the necessary accessories on hand.

- **COMBINATION FOIL/FOAM UNDERLAY.** This is to be laid on top of the sub-floor (foil side up) for moisture protection, sound deadening and insulation. Superfoil* 2.5mm foam backed aluminium foil underlay is recommended. Must be used with 7mm, 8mm and 10mm Formica Flooring.
- **MOISTURE BARRIER (200UM POLYETHYLENE FILM).** Must be laid over the sub floor for moisture protection for use with 12mm Formica Flooring. Do not use foam underlay with 12mm Formica Flooring as this can cause joins to squeak.
- **SILVER PVC (MOISTURE RESISTANT) TAPE.** This is used on the jointing seam of combination underlay. It is not required if Formica Superfoil Underlay is used as this already has a pre-adhered joining tape.
- **INSTALLATION SPACERS (WEDGES USED FOR CREATING EXPANSION GAPS).** Make sure you remove these after installation.
- **EXPANSION PROFILES[^]** These are used as a threshold cover between doorways or when dividing the floor into sections.
- **QUAD BEADING[^]/SCOTIA.** This is used to conceal the expansion gap left around the perimeter of the laid flooring and or skirting board. **PLEASE NOTE:** The quad base must be a minimum of 12mm to be suitable for Formica Flooring. A guide for Commercial expansion systems and cover strips is detailed on pages 12-15.
- **LOCK SEAL^{*}** This is used for joining cut-off sections of flooring around pipes/columns and when the 'stopper' is trimmed off the locking tongue to allow for door jambs. It's also required for sealing edges of planks in areas that are susceptible to accidental water spillage.

Please also make sure you have the correct quantity of accessories to complete the installation. For assistance, refer to the Formica Flooring Room Calculator within this booklet.

*For detailed information regarding accessories listed, refer to page 6.

[^]Refer to the Formica Flooring Expansion Joint and Trim Guide on page 12.

ACCESSORIES CHECKLIST

ADDITIONAL ACCESSORIES

You may need one or all of the following accessories for the installation, care and maintenance of your Formica Flooring.

- **SUPERFOIL UNDERLAY.** This is a 2.5mm high-density polyethylene, low compression foam that is laminated to a heavy duty insulating foil. Superfoil underlay has a self-adhesive joining flap for easy installation and provides an excellent moisture barrier in addition to an insulation barrier for added energy efficiency.
- **COLOUR FILL REPAIRER.** This is a hardwearing compound developed to repair chips and scratches that may accidentally occur when installing laminate or timber flooring. Colour Fill is colour matched to flooring for practically invisible repairs. And can be used to fill open joints that may appear between planks.
- **LOCKSEAL ADHESIVE AND SEALANT.** This adds additional water resistance to floor joints in areas where accidental water spillage may occur. Its adhesive properties also provide added strength to the end lock of the plank, or to areas where the tongue is removed to allow fitting in confined areas.
- **DEEP CLEANER.** This is a strong activating cleaner that removes wax residue, floor polish, difficult stains, pen markings and scuffmarks without harming the flooring surface.
- **ZIP CLEAN.** This is a high quality, cleaning product developed for regular use to help maintain laminate flooring appearance.

QUICK TOOLS CHECKLIST

Do you have all the right tools?

- Pencil and set square to draw straight lines.
- Razor-knife or scissors to cut the combination underlay.
- A saw that's suitable for cutting melamine.
- Fine sharp tooth hand or jigsaw.
- Measuring tape and 2m straight edge ruler.
- Electric drill and 6mm bit for fitting expansion profiles or door threshold trims.
- Long thin nails, approx 30mm, or liquid nail adhesive to fix Quad beading/Scotia to skirting boards around cement walls.
- Screws and screwdriver for fixing expansion profile (optional).

IMPORTANT INFORMATION

IMPORTANT PRODUCT INFORMATION

Getting the most out of your Formica Flooring.

- Do not install Formica Flooring in bathrooms, laundries and toilets or other areas exposed to potential flooding.
- Formica Flooring is not recommended for installation on sub floors with electrical under floor heating systems.
- Take care when transporting the boxes to avoid any possible damage. Damaged boxes may void the product warranty. Place unopened boxes inside the building where the floor is to be laid. Do not leave outside.
- Before commencing the installation, open one box only and carefully read the laying instructions.
- Always use the correct accessories when laying Formica Flooring to ensure the product warranty does not become void.*
- Formica Flooring is manufactured from approximately 90% natural wood fibre, and like all wood based products, it will expand and contract with changes in room temperature and humidity. Uneven joints and gaps between planks of 0.1mm and 0.2mm are within normal product tolerances.
- Formica Flooring meets Australian Standards for UV resistance, however flooring may fade according to the degree of exposure to UV sunlight and ageing of the floor. This is within normal product tolerances.
- For dark colour planks, white lines may appear between joints after flooring has been installed and may be removed with Zip Clean or Deep Cleaner. This is within normal product tolerances and will fade away as the floor is used.

IMPORTANT GUIDELINES FOR COMMERCIAL FLOOR AREAS

- As a general rule, heavy furniture such as reception counters should not exceed 500kg.
- Heavy objects supported on legs or castors that inhibit weight distribution should be avoided.
- Do NOT attach units or fixtures to Formica Flooring. You must fix these items to the sub floor and allow sufficient expansion gaps around any fixing points.^
- A commercial grade-skirting product may be used to conceal the floorings perimeter expansion gap.^ Skirting must be fixed to the wall and not the Formica Flooring.

*For more detailed information regarding accessories listed, please refer to page 6.

^Refer to the Formica Flooring Expansion Joint and Trim Guide on page 12.

ROOM CALCULATOR

FORMICA FLOORING ROOM CALCULATOR

ROOM NAME	LENGTH	WIDTH	m ² (LxW)
Room 1			
Room 2			
Room 3			
Total of each column =	A	B	C
Add 5% extra for wastage to part C figure	D = C + 5%		D
LAMINATE FLOORING 7mm = 2.1m ² 8mm = 1.9m ² (for 7 planks per pack) or 2.4m ² (for 9 planks per pack) 10mm = 1.3m ² 12mm = 1.3m ² SUPERGLOSS FLOORING 10mm = 2.3m ²			

FORMICA FLOORING ACCESSORIES CALCULATOR

PRODUCT	E (Room calculator)	F (Pack qty)	G (Amount needed)
Formica Flooring Underlay (Laid on top of the sub-floor underneath Formica Flooring for moisture protection and sound insulation.)	Total part D	30m ² per roll (i.e. + by 30)	No. of rolls
	= (2 x A) + (2 x B)	Scotia beading comes in 2.4m lengths (i.e. + by 2.4)	No. of lengths
Multifloor Trim (Used as threshold between doorways. When dividing the floor into sections. Available in 1800mm.)	No. of doorways	900mm for each doorway	No. of trims
	Room specific	500ml bottle = 50 linear metres (5 packs)	No. of bottles

NOTE We recommend the use of Unika brand of accessories and cleaning products to be used with Formica Flooring.

SUB FLOOR PREPARATION

Ensuring the sub floor is ready for your new flooring is incredibly important. Carefully read the following guidelines for the best possible installation result.

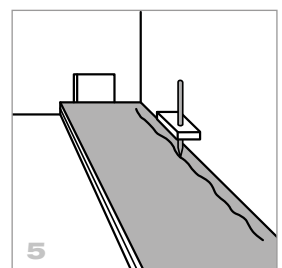
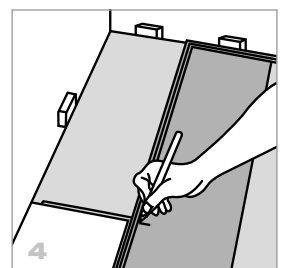
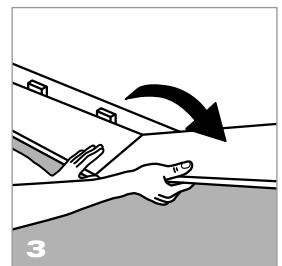
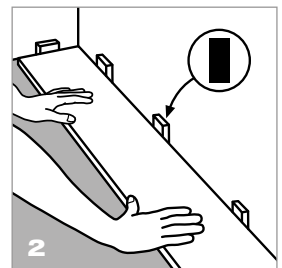
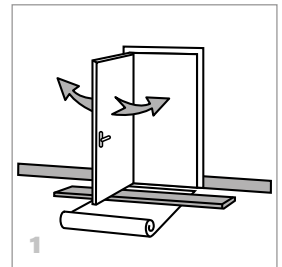
- All sub floors (concrete, solid timber floor boards, plywood, particleboard, vinyl, cork and ceramic tiles) must be level, clean and dry.
- Carpets are not suitable sub floors.
- Existing sub floors must be checked to ensure they are securely fixed and level. If any parts of the existing sub floor are loose they must be refixed prior to installing Formica Flooring.
- Depressions in the sub floor must not exceed 3mm under a 1m straight edge. Depressions greater than 3mm must be filled in with a floor-levelling compound. Similarly, raised areas exceeding 3mm over a 1m straight edge must be levelled by sanding or grinding.
- A combination underlay (0.2mm polyethylene film and 2.5mm foam underlay) must be laid over all existing sub floors. Superfoil underlay has a pre-adhered joining tape. All other underlays must be secured with a silver PVC tape along the seams.
- The combination underlay must be laid along the length of the room in the installation of 7mm, 8mm, and 10mm Formica Flooring.

PLEASE NOTE 12mm Formica Flooring has an acoustic underlay already attached. A moisture barrier of 200um polyethylene film must be laid over the sub floor and taped down prior to laying this product. Do not use foam Underlay with 12mm Formica Flooring.

STEP-BY-STEP GUIDE TO INSTALLATION

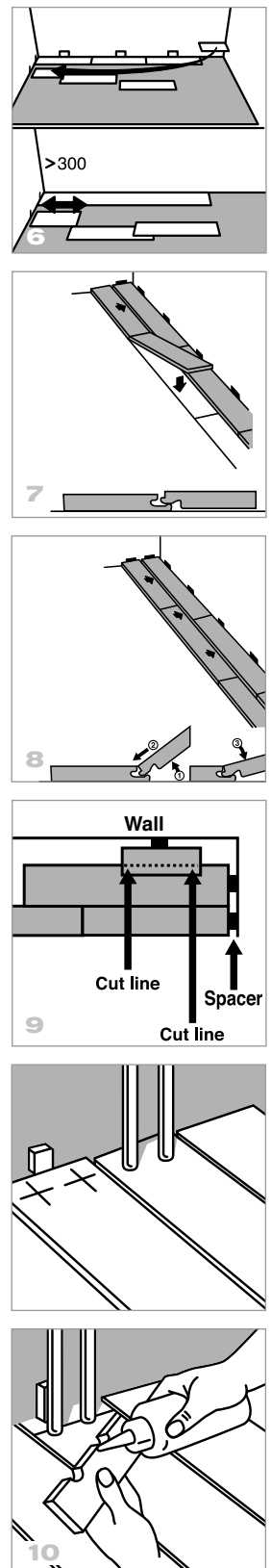
IMPORTANT Do not use a tapping block or pull bar in the installation of Formica Flooring. And under no circumstance, use a hammer to connect the planks, as this will damage the locking system.

- 1** Prepare the sub floor as per the Sub Floor Preparation Guide on page 9. It is recommended that all skirting boards and trims be removed prior to installing Formica Flooring. However, for residential applications, skirting boards can be left in place. Quad beading/scotia can then be used to conceal the perimeter expansion gap.
- 2** (Refer Diagram 1) Check if the bottom of the door fits over the laminate flooring through the entire arc of swing. If the door touches the plank, the bottom of the door will need to be trimmed.
- 3** (Refer Diagram 2) Start laying the planks from the left corner (working left to right). Place the plank with the groove on both the end and side, facing the wall. Please note: The protruding long lip on the side, referred to as the tongue, should be facing you and not the wall. Insert installation spacers for the perimeter expansion gap (refer Pre-Installation Checklist to calculate the correct gap for the floor area). A minimum of 10mm is required at all times.
- 4** (Refer Diagram 3) Connect the next plank in the row by placing the end groove into the adjoining plank's end tongue. Repeat until you reach the end of the row. Continue to place installation spacers at 300mm intervals and when starting the next row on the ends.
- 5** (Refer Diagram 4) For the last piece in the row, move the tongue side of the plank to face the tongue of the adjoining plank (so the groove on the end faces the wall). Insert the installation spacer to allow for an expansion gap, and then mark where the plank is to be cut. Once cut, the plank with the groove on the end should be connected to the end tongue of the adjoining plank (refer Diagram 3). Please note: When using a jigsaw to cut planks, make sure you face the decorative side down. When using a handsaw, face the decorative side up. Always use a sharp fine saw tooth.
- 6** (Refer Diagram 5) Before starting the next row, check the first row is straight with a string line or 2m straight edge ruler (align against the protruding tongue). More installation spacers may be needed to make the first row straight. If the wall is too uneven, then the line of the wall must be marked onto the plank surface and the plank then cut lengthwise to fit the profile of the wall.



- 7** (Refer Diagram 6) To start the next row, use the off cut from the previous row (ensure the minimum length is 300mm) or use a new plank.
- 8** Connect the planks of the second row at the ends and place them on top of the bottom lip of the protruding tongue (refer Diagram 7). Then lift the planks gently and slot them into the protruding tongue of the adjoining plank, working left to right (refer Diagram 8.) Please note: You may need to use masking tape to hold down the planks already laid. Once the planks are connected in the row you can remove the tape.
- 9** (Refer Diagram 9) When laying the last row – using the off cut from the previous row – turn the plank over with the groove side facing the wall and the decorative side facing down. Make sure you have installation spacers placed against the wall for an expansion gap, then mark a line indicating where you need to cut. Once the plank has been cut, take the piece with the groove side (decorative side facing up) and place on top of the bottom lip of the protruding tongue and repeat Step 8.
- 10** Fitting around the door jambs and between the door frame. Allow for a 10mm expansion gap when laying planks around door jambs. Formica Flooring must be laid separately between door frames. Allow a 20mm gap between the door frame and cover the gap with an expansion profile. When installing around pipes and columns, you need to mark the centre of each pipe/column on the plank. To do this, place the plank in front of, and then alongside, the pipe/column. This should give an accurate centre point to drill holes (refer Diagram 10). To allow for an expansion gap, drill holes 10mm larger than the pipes/columns on the marked area of the plank. Next, cut the plank crossways through the centre of the drilled holes. Fit the largest piece of the plank first, then apply Lock Seal[®] to the smaller section of flooring (as per the instructions on the bottle). Fit the smaller section around the pipes/columns, being careful not to glue the piece to the sub floor, pipes/columns or wall.
- 11** When you have finished laying the floor, remove all installation spacers and fix the quad beading to the skirting boards (by laying it on top of the laminate flooring), to cover the perimeter expansion gap. Use long thin nails, approximately 30mm, to fix the quad beading onto the skirting board. For cement walls use liquid nail adhesive. **PLEASE NOTE:** Quad beading placed around corners are to be cut at 45 degree angles at both joining ends for a neat fit.

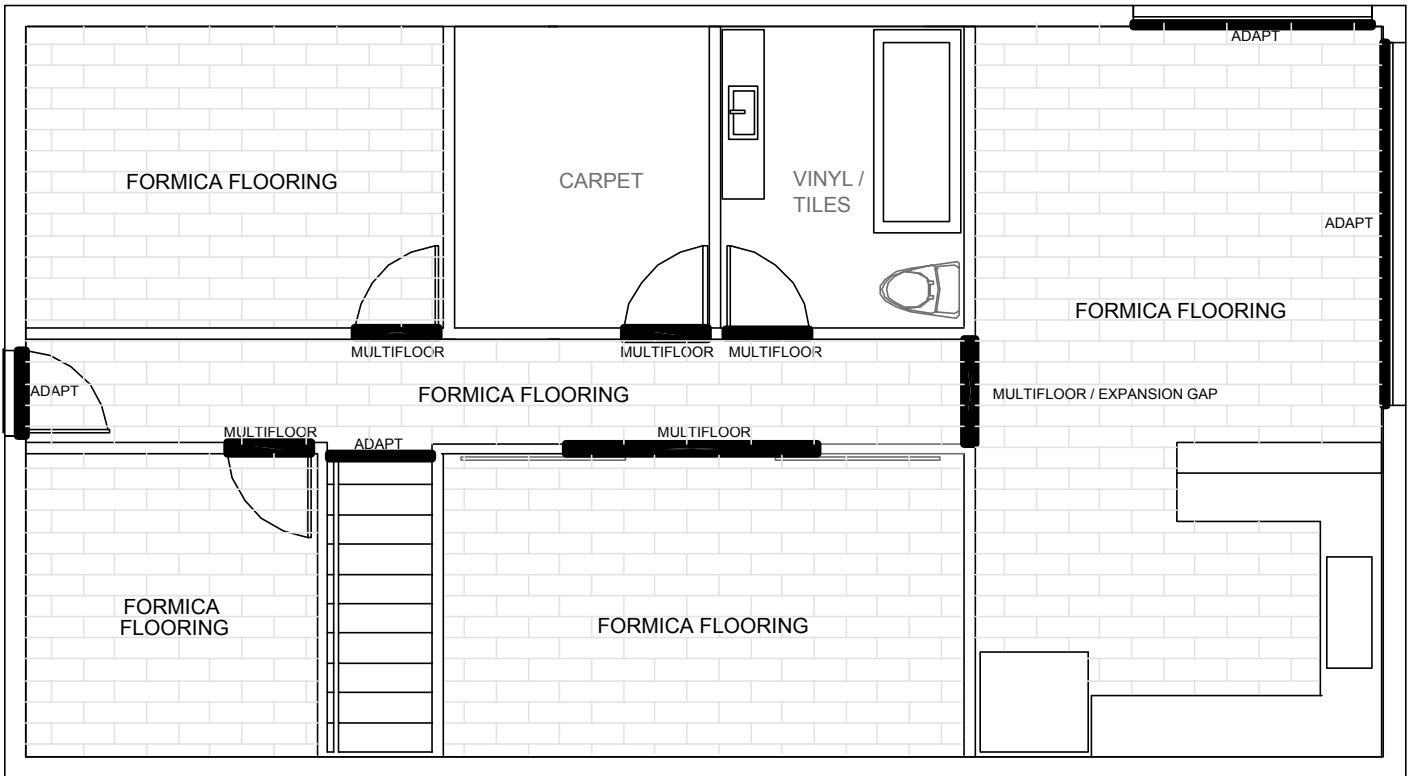
Finally, inspect the floor. If there are small chips on the plank surface these need to be filled in using Colour Fill* repair kit. Make sure the colour is matched to the laminate floor. Follow the instructions on the pack.



[^]Refer to the Formica Flooring Expansion Joint and Trim Guide on page 12.

^{*}For more detailed information regarding accessories listed, please refer to page 6.

TRIM GUIDE



PLEASE NOTE Expansion gaps required on all parameters.

PROFILES

Multifloor T1

T profile transition between level and lower floors.

Adapt T5

End profile transition to walls and higher floors.

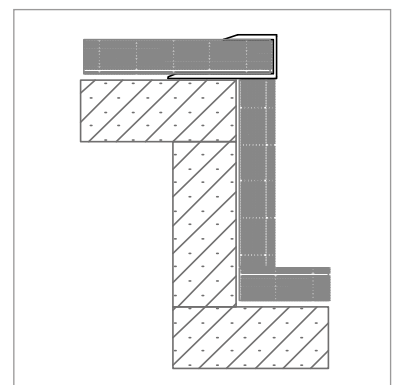
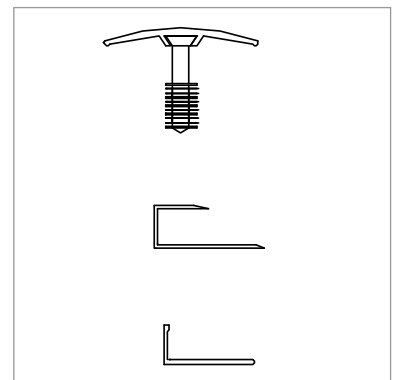
Tilers Mate – L Angle

End and level profile transition.

TRANSITION EXAMPLES

Adapt T5

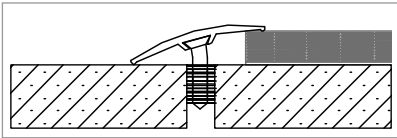
End profile transition for stairs.
Formica Flooring must be glued to sub floor.



RIGHT Formica Laminate Flooring in Smoke Cedar.

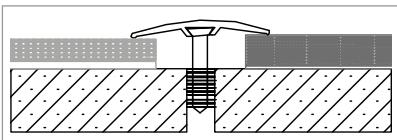


END PROFILE TRANSITIONS



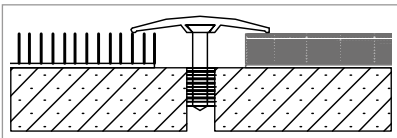
MULTIFLOOR T1

Transition from Formica Flooring to a lower hard floor surface, such as tiles, wood or vinyl.



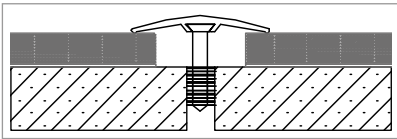
MULTIFLOOR T1

Transition from Formica Flooring to a raised floor surface, such as ceramic tiles.



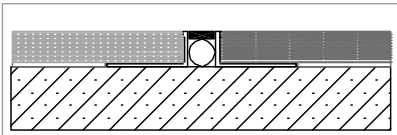
MULTIFLOOR T1

Transition from Formica Flooring to carpet.



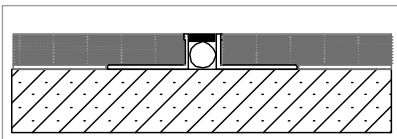
MULTIFLOOR T1

Transition from Formica Flooring to Formica Flooring. Use at doorways and expansion joints.



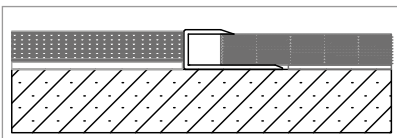
TILERS MATE - L ANGLE

Transition from Formica Flooring to a level hard floor surface (+/-2mm), such as tiles, wood or vinyl. Keep minimum gap and fill with Colour Sealant.



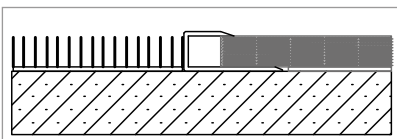
TILERS MATE - L ANGLE

Transition from Formica Flooring to Formica Flooring. Keep minimum 10mm gap. Fill with sealant used at expansion joints and doorways.



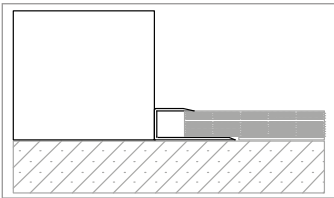
ADAPT T5

End profile transition from Formica Flooring to a level hard floor surface (+/-2mm), such as tiles, wood or vinyl.

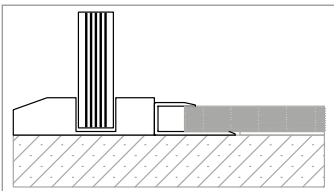


ADAPT T5

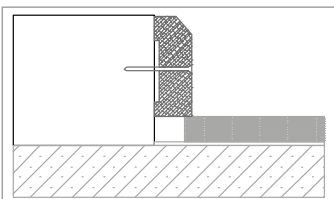
End profile transition from Formica Flooring to carpet.



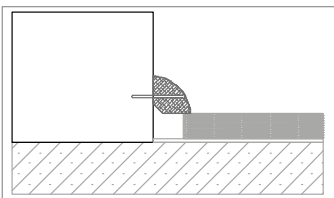
Adapt T5 End profile transition from Formica Flooring to other higher and vertical surfaces, such as walls and fireplace hearths.



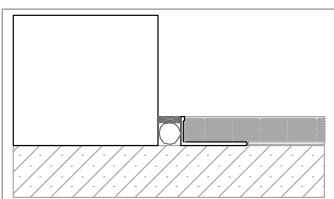
Adapt T5 End profile transition from Formica Flooring to other higher and vertical surfaces, such as walls and fireplace hearths.



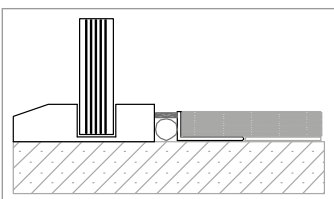
Skirting 12mm + Use to cover expansion gaps around room perimeter.



Quarter Round 12mm + Use to cover expansion gaps around room perimeter.



Tilers mate L angle. Use for expansion gaps where skirting not applicable. Keep minimum 10mm gap and fill with same sealant used for expansion joints and doorways.



Tilers mate L angle. Use for expansion gaps at sliding doors and glazing beads. Keep minimum 10mm gap and fill with the same sealant used for expansion joints and doorways.

AFTER CARE AND CLEANING

The best ways to keep your floors shining:

- Under no circumstances should you wash the floor with wet cloths or mops. This only spreads dirt and can cause swelling of the joints.
- Do not clean Formica Flooring with wax, polish, floor cleaner, detergent or scouring materials. Use only recommended Flooring cleaning products.
- Steam mops must not be used on Formica Flooring. They will cause irreversible damage and will void the product's warranty.
- Regularly clean Formica Flooring with a vacuum cleaner or micro-fibre mop, and Zip Clean.
- If the floor is very dirty or has stains, vacuum first to remove dust and loose dirt. Then use Deep Cleaner* following the instructions on the bottle. (Available from major flooring retail outlets.)

TIPS ON MAINTENANCE

- Wipe up accidental spills immediately, with a clean, dry cloth. Liquid spills left on Formica Flooring will cause swelling of the joints.
- Fit all movable furniture, like tables and chairs with felt pads.
- Place a doormat outside all external doors. Sand, dirt and grit act like abrasive paper and will damage the Formica Flooring surface layer.
- Place a plastic mat or rug under rolling chairs.
- Lay dirt-absorbing mats down in areas most often exposed to dirt, such as entrance halls or hallways.
- Do not wax or varnish Formica Flooring. It has been designed and manufactured with a high strength stain resistant surface layer. Applying wax or varnish will smear, yellow and glaze the surface.
- Should accidental scratches occur on the surface layer of the plank, apply Colour Fill[®] to repair (available from major flooring and hardware retail outlets.)
- If more serious damage to planks occurs, please call The Laminex Group on 132 136 for assistance.

*For more detailed information regarding accessories listed, please refer to page 6.

TECHNICAL INFORMATION

FLOOR THICKNESS	12mm Laminate Flooring	10mm Laminate Flooring	8mm Laminate Flooring	7mm Laminate Flooring	10mm Supergloss Flooring
Product class	32	32	32	31	31
Commercial limited warranty	7 years	7 years	7 years	–	5 years
Residential limited warranty	20 years	15 years	15 years	10 years	30 years
Size per plank (mm)	1380 x 193 x 12	1380 x 116 x 10	1380 x 193 x 8	1380 x 193 x 7	1380 x 116 x 10
Planks per pack	5	8	7 / 9	8	14
m ² per pack	1.33m ²	1.28m ²	1.86m ² / 2.40m ²	2.13m ²	2.24m ²
Weight per pack (approx)	13.6kg	10.8kg	12.6kg	12.7kg	19.0kg
Substrate	Aquastop 6 HDF	Aquastop 6 HDF	Aquastop 6 HDF	Standard HDF	Aquastop 6 HDF
Silent underlay	Yes	-	-	-	-
Formaldehyde emission	E1	E1	E1	E1	E1
Swelling (EN 317)	<6%	<6%	<6%	<12%	<6%
Impact resistance (EN 685)	IC2	IC2	IC2	IC1	IC2
Abrasion resistance (EN 685)	AC4	AC4	AC4	AC3	AC4

TECHNICAL INFORMATION

TEST	METHOD		RESULT
12mm Formica Laminate Flooring			
Acoustic Testing	ISO140-8 and 140-6		Max 62dB
Slip Testing	AS/NZS 4586: 2004	Wet Pendulum Oil-wet Ramp	Z R9
Fire Rating	AS ISO 9239.1: 2003	Critical Radiant Flux Average Smoke Obscuration	7.1kW/m ² Less than 20%
10mm Formica Laminate Flooring			
Acoustic Testing	ISO140-8 and 140-6		Max 62dB
Slip Testing	AS/NZS 4586: 2004	Wet Pendulum Oil-wet Ramp	Z Not Rated
Fire Rating		Critical Radiant Flux Average Smoke Obscuration	
8mm Formica Laminate Flooring			
Acoustic Testing	ISO140-8 and 140-6		Max 62dB
Slip Testing	AS/NZS 4586: 2004	Wet Pendulum Oil-wet Ramp	Y R9
Fire Rating	AS ISO 9239.1: 2003	Critical Radiant Flux Average Smoke Obscuration	7.1kW/m ² Less than 20%
7mm Formica Laminate Flooring			
Acoustic Testing			
Slip Testing	Rating Pendulum		
Fire Rating	Critical Radiant Flux Average Smoke Obscuration		
10mm Formica Supergloss Flooring			
Acoustic Testing	ISO140-8 and 140-6		Max 62dB
Slip Testing	AS/NZS 4586: 2004	Wet Pendulum Oil-wet Ramp	Z Not Rated
Fire Rating		Critical Radiant Flux Average Smoke Obscuration	

LIMITED WARRANTY INFORMATION

To validate your product warranty, please keep the label along with the original purchase receipts, including any installation receipts if applicable. Failure to have all documents will void the product warranty.

EXCLUSIONS APPLICABLE TO BOTH RESIDENTIAL AND COMMERCIAL WARRANTY

1. Movement in the flooring caused by incorrect installation methods. **2.** Expansion caused as a direct result of the following: a) Moisture rising from the sub floor, absorbed into the product. b) Moisture absorbed into the product as a direct result of water/liquid spillage or excess water used to clean the product. **3.** Damage caused as a direct result of the following: a) Vehicular traffic b) Abnormal use c) Abusive use d) Poor maintenance e) Exposing the floor to excessive sand, grit or gravel. **4.** Where the product has been used in high humidity areas (wet areas excluding domestic kitchens). **5.** Outdoor applications. **6.** Defective planks used in the installation.

Upon making a warranty claim you will need to provide proof of purchase along with an original Formica Flooring product label. Upon approval of a claim, The Laminex Group will supply replacement product in the closest decors available in the range at the time of the claim.

FORMICA RESIDENTIAL LIMITED WARRANTY

Floor Thickness Limited Warranty Period

12mm Laminate Flooring	20 years
10mm Laminate Flooring	15 years
8mm Laminate Flooring	15 years
7mm Laminate Flooring	10 years
10mm Supergloss Flooring	30 years

TERMS AND CONDITIONS

1. The Laminex Group as the distributor of Formica Flooring guarantees to the first purchaser that the product is free from manufacturing defects notified in writing to The Laminex Group within the nominated time period from the date of original supply. **2.** The Laminex Group's liability to the first purchaser for defects is limited to those defects caused directly by the manufacturing process for Formica Flooring. **3.** This warranty given by The Laminex Group is in addition to, and in no way limits, any warranty enjoyed by the first purchaser pursuant to the Australian Trade Practices Act 1974 or relevant State Fair Trading legislation. **4.** This warranty guarantees the product against splitting, delaminating, twisting, structural deformation and wearing through of the wear and stain resistant coating in a residential environment for the nominated period. It is conditional upon the product being used in normal wear residential situations only and installed, maintained

and protected from damage strictly in accordance with the manufacturer's guidelines as supplied with the product. **5.** This warranty is restricted to the replacement of the defective product only and does not extend to cover claims for any consequential loss, damage or expense incurred howsoever (including, but not restricted to labour and other costs in replacing the product, inconvenience and physical injury). In the event of a colour no longer being available in the range, a selection from the current range will be offered in its place.

FORMICA FLOORING COMMERCIAL LIMITED WARRANTY

Floor Thickness Limited Warranty Period

12mm Laminate Flooring	7 years
10mm Laminate Flooring	7 years
8mm Laminate Flooring	7 years
7mm Laminate Flooring	-
10mm Supergloss Flooring	5 years

TERMS AND CONDITIONS

1. The Laminex Group as the distributor of Formica Flooring guarantees to the first purchaser that the product is free from manufacturing defects notified in writing to The Laminex Group within the nominated time from the date of original supply. **2.** The Laminex Group's liability to the first purchaser for defects is limited to those defects caused directly by the manufacturing process for Formica Flooring. **3.** This warranty given by The Laminex Group is in addition to, and in no way limits, any warranty enjoyed by the first purchaser pursuant to the Australian Trade Practices Act 1974 or relevant State Fair Trading legislation. **4.** This warranty guarantees the product against splitting, delaminating, twisting, structural deformation and wearing through of the wear and stain resistant coating in a general commercial environment for the nominated period. It is conditional upon the product being used in normal wear general commercial situations only and installed, maintained and protected from damage strictly in accordance with the manufacturer's guidelines as outlined in this document. **5.** This warranty is restricted to the replacement of the defective product only and does not extend to cover claims for any consequential loss, damage or expense incurred howsoever (including, but not restricted to, labour and other costs in replacing the product, inconvenience and physical injury). In the event of a colour no longer being available in the range, a selection from the current range will be offered in its place.

Product marketed and distributed by Laminex Group Pty Limited ABN 98 004 093 092. Made in Austria to The Laminex Group specifications.



INFORMATION Visit formica.com.au for colour and design tips, technical information, care, maintenance and more.

ENQUIRIES Call 132 136.

SAMPLES Call 1800 002 204.

WARRANTY 5-30 year limited warranties. Visit formica.com.au to find out more.

Formica stockist

formica.com.au

Formica Flooring is marketed and distributed by The Laminex Group, a division of Laminex Group Pty Limited ABN 98 004 093 092. The colours of the products featured within the imagery in this guide are as close to the Formica Flooring range as photographic lighting and modern printing processes allow. Formica Flooring is no different than any other material in that darker colours will always show scratches and superficial wear and tear more readily than lighter colours. Formica Flooring should be protected from strong, direct sunlight as continuous exposure may cause discolouration or fading to the surface. Please obtain a copy of the terms and conditions of Formica Flooring 5-30 year limited warranties from The Laminex Group or visit formica.com.au. This warranty is in addition to any rights that may exist under the Trade Practices Act. **Formica**®, **Supergloss**™